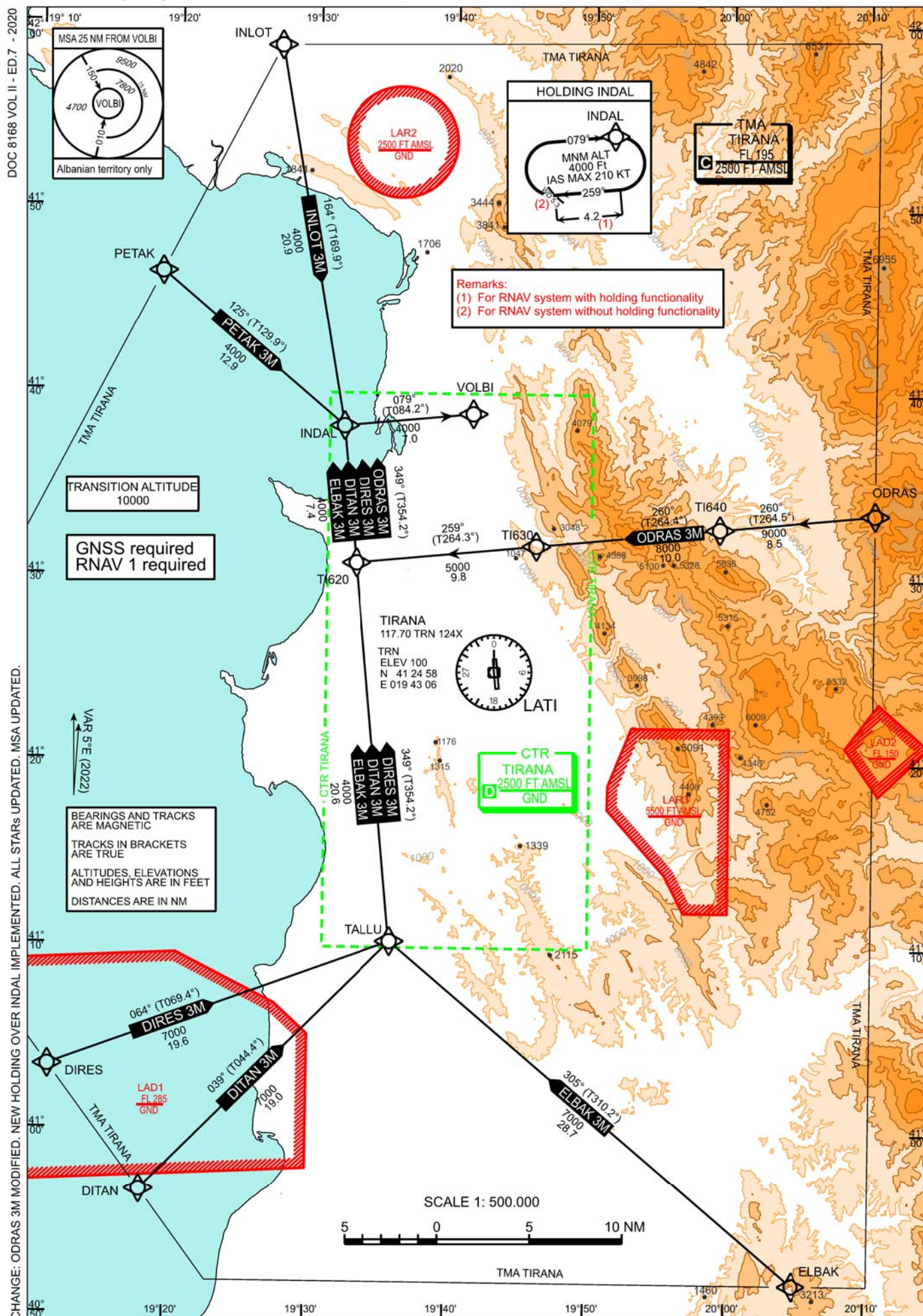


AD ELEV 125 FT
VAR 5° E

		ATIS	132.275		
TWR	122.500	APP	133.150	ACC	127.500
	123.500		136.350		136.350

TIRANA, LATI
RNAV STAR RWY 17
ALBANIA



Designator	Route					Remarks					
INLOT 3M	INLOT – INDAL – VOLBI										
Inlot three mike arrival											
RNAV STAR Coding Table of INLOT 3M											
Path Terminator	Waypoint		Course/ Track °MAG (° True)	DIST NM	Turn Direction	Constraints		Navigation Specification	Remarks		
	Identifier	Coordinates				Crossing ALT	Speed				
IF	INLOT	no	N415847.00 E0192711.00			F120+		RNAV 1			
TF	INDAL	no	N413813.00 E0193204.00	164° (169.9°)	20.9		A4000+	RNAV 1			
TF	VOLBI	no	N413855.00 E0194122.00	079° (084.2°)	7.0	left	A4000+	RNAV 1			
Designator	Route					Remarks					
ODRAS 3M	ODRAS – TI640 – TI630 – TI620 – INDAL – VOLBI										
Odras three mike arrival											
RNAV STAR Coding Table of ODRAS 3M											
Path Terminator	Waypoint		Course/ Track °MAG (° True)	DIST NM	Turn Direction	Constraints		Navigation Specification	Remarks		
	Identifier	Coordinates				Crossing ALT	Speed				
IF	ODRAS	no	N413335.00 E0201027.00			F140+		RNAV 1			
TF	TI640	no	N413246.33 E0195913.02	260° (264.5°)	8.5		A9000+	RNAV 1			
TF	TI630	no	N413147.72 E0194601.25	260° (264.4°)	10.0		A8000+	RNAV 1			
TF	TI620	no	N413048.73 E0193304.60	259° (264.3°)	9.8		A5000+	RNAV 1			
TF	INDAL	no	N413813.00 E0193204.00	349° (354.2°)	7.4	right	A4000+	RNAV 1			
TF	VOLBI	no	N413855.00 E0194122.00	079° (084.2°)	7.0	right	A4000+	RNAV 1			
Designator	Route					Remarks					
PETAK 3M	PETAK – INDAL – VOLBI										
Petak three mike arrival											
RNAV STAR Coding Table of PETAK 3M											
Path Terminator	Waypoint		Course/ Track °MAG (° True)	DIST NM	Turn Direction	Constraints		Navigation Specification	Remarks		
	Identifier	Coordinates				Crossing ALT	Speed				
IF	PETAK	no	N414631.00 E0191850.00			F120+		RNAV 1			
TF	INDAL	no	N413813.00 E0193204.00	125° (129.9°)	12.9		A4000+	RNAV 1			
TF	VOLBI	no	N413855.00 E0194122.00	079° (084.2°)	7.0	left	A4000+	RNAV 1			
Path Terminator	Identifier	Inbound Course °M (°T)	Leg Distance (NM) ^(b)	Timing min./ Waypoint Distance ^(a)	Turn Direction	Minimum Altitude (FT)	Maximum Altitude (FL)	Speed Limit (kt)	Magnetic Variation (°)	Navigation Specification	Remarks
HOLD HM	INDAL	079° (084.2°)	4.2	-5.3	Right	+4000		210	4.9	RNAV 1	

Remarks:
(1) For RNAV system with holding functionality
(2) For RNAV system without holding functionality

Designator	Route					Remarks			
DIRES 3M	DIRES – TALLU – TI620 – INDAL – VOLBI								
Dires three mike arrival									
RNAV STAR Coding Table of DIRES 3M									
Path Terminator	Waypoint		Course/ Track °MAG (° True)	DIST NM	Turn Direction	Constraints		Navigation Specification	Remarks
	Identifier	Flyover				Coordinates	Crossing ALT		
IF	DIRES	no	N410328.00 E0191133.00				F120+	RNAV 1	
TF	TALLU	no	N411020.00 E0193551.00	064° (069.4°)	19.6		A7000+	RNAV 1	
TF	TI620	no	N413048.73 E0193304.60	349 (354.2)	20.6	left	A4000+	RNAV 1	
TF	INDAL	no	N413813.00 E0193204.00	349° (354.2°)	7.4		A4000+	RNAV 1	
TF	VOLBI	no	N413855.00 E0194122.00	079° (084.2°)	7.0	right	A4000+	RNAV 1	
Designator	Route					Remarks			
DITAN 3M	DITAN – TALLU – TI620 – INDAL – VOLBI								
Ditan three mike arrival									
RNAV STAR Coding Table of DITAN 3M									
Path Terminator	Waypoint		Course/ Track °MAG (° True)	DIST NM	Turn Direction	Constraints		Navigation Specification	Remarks
	Identifier	Flyover				Coordinates	Crossing ALT		
IF	DITAN	no	N405644.00 E0191813.00				F120+	RNAV 1	
TF	TALLU	no	N411020.00 E0193551.00	039° (044.4°)	19.0		A7000+	RNAV 1	
TF	TI620	no	N413048.73 E0193304.60	349 (354.2)	20.6	left	A4000+	RNAV 1	
TF	INDAL	no	N413813.00 E0193204.00	349° (354.2°)	7.4		A4000+	RNAV 1	
TF	VOLBI	no	N413855.00 E0194122.00	079° (084.2°)	7.0	right	A4000+	RNAV 1	
Designator	Route					Remarks			
ELBAK 3M	ELBAK – TALLU – TI620 – INDAL – VOLBI								
Elbak three mike arrival									
RNAV STAR Coding Table of ELBAK 3M									
Path Terminator	Waypoint		Course/ Track °MAG (° True)	DIST NM	Turn Direction	Constraints		Navigation Specification	Remarks
	Identifier	Flyover				Coordinates	Crossing ALT		
IF	ELBAK	no	N405151.00 E0200452.00				F120+	RNAV 1	
TF	TALLU	no	N411020.00 E0193551.00	305° (310.2°)	28.7		A7000+	RNAV 1	
TF	TI620	no	N413048.73 E0193304.60	349 (354.2)	20.6	right	A4000+	RNAV 1	
TF	INDAL	no	N413813.00 E0193204.00	349° (354.2°)	7.4		A4000+	RNAV 1	
TF	VOLBI	no	N413855.00 E0194122.00	079° (084.2°)	7.0	right	A4000+	RNAV 1	