

INSTRUMENT
APPROACH
CHART - ICAO

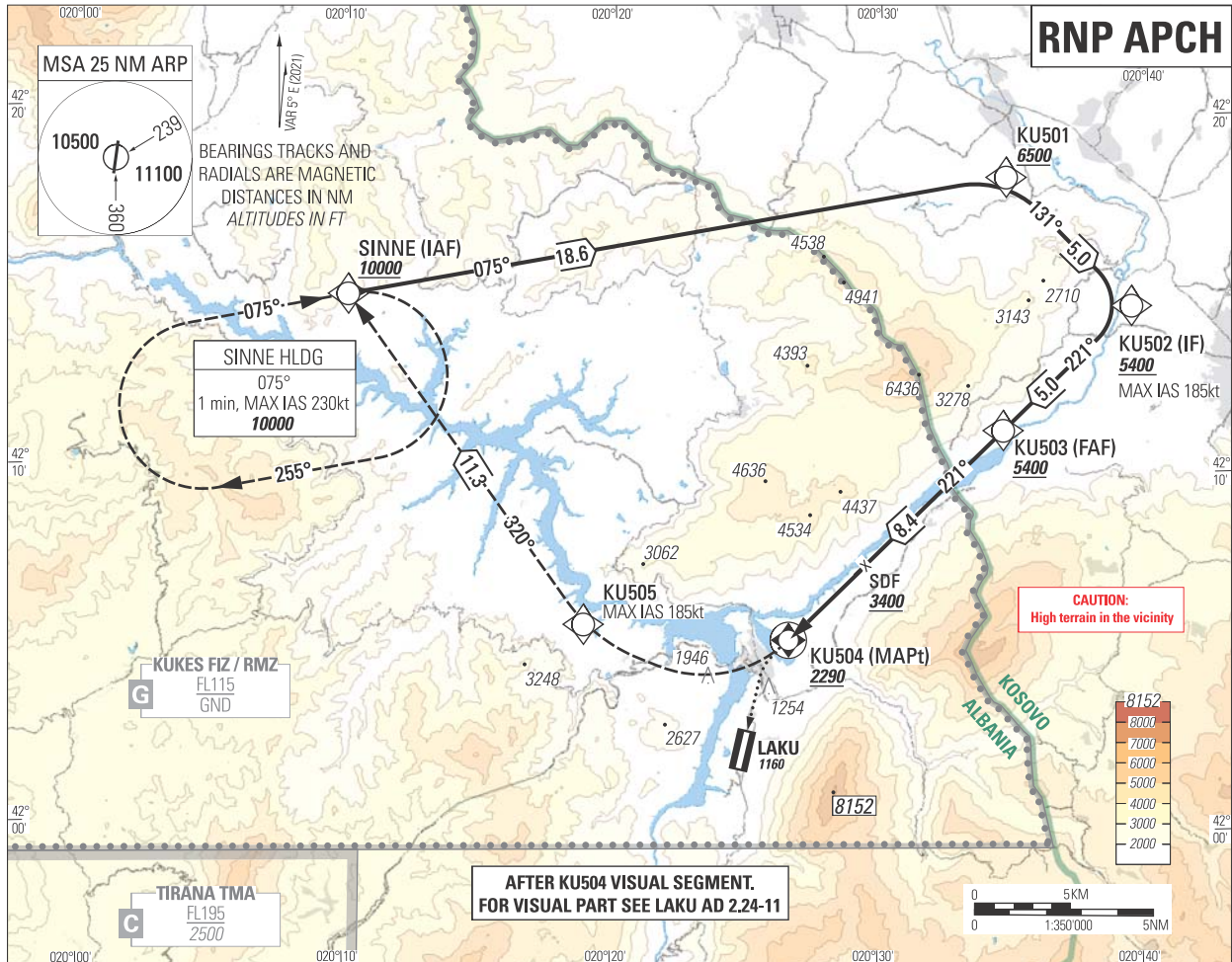
AD ELEV 1160 FT

TRANSITION ALTITUDE
10000

AERODROME INFORMATION

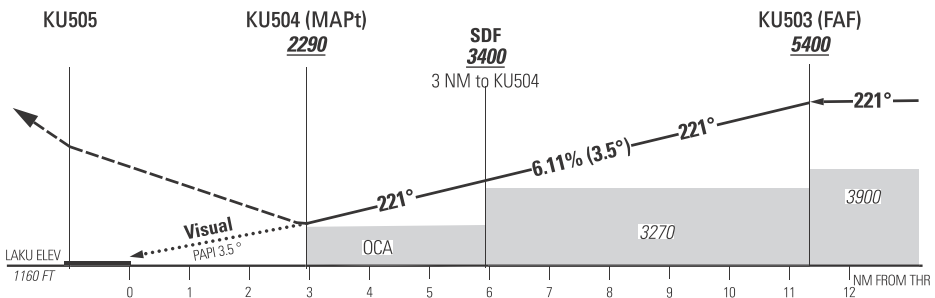
118.375

119.825

KUKES LAKU
RNP RWY 19 (LNAV only)
CAT A/B/C/D**MISSSED APPROACH**

Climb to 10000 FT AMSL,
at KU504 turn RIGHT to
KU505 (MAX 185 KIAS),
then continue to SINNE
and join holding.

If unable to comply with
minimum holding altitude,
turn RIGHT at SINNE to
establish on initial approach
track and continue climb to MSA.



OCA (OCH) in FT	A	B	C	D
M/A 2.5%	2650 (1498)			
M/A 4.0%	2290 (1138)			

DIST to MAPt (NM)	1	2	2.7	3	4	5	6	7	8	8.4
ALT (FT)	2653	3024	3284	3395	3766	4138	4509	4880	5251	5400

GS kt	60	80	100	120	140	160	180
ROD (FT/min)	371	495	619	743	866	990	1114

CAUTION / REQUIREMENT

Minimum visibility 5 KM and
ceiling 2300 FT AAL
ceiling 1200 FT AAL (downwind CAT A only)
Final track not aligned with the RWY
PAPI required

RNP RWY 19

TABULAR DESCRIPTION

Serial No.	Path Term.	Waypoint identifier	Fly-over	Course °M (°T)	Dist. (NM)	Turn	Altitude (ft)	Speed Limit (KIAS)	VPA (°)	Navigation Specification
001	IF	SINNE	-	-	-	-	+10000	-	-	RNP APCH
002	TF	KU501	-	75 (79.6)	18.6	-	+6500	-		RNP APCH
003	TF	KU502	-	131 (135.4)	5.0	-	+5400	-185		RNP APCH
004	TF	KU503	-	221 (225.5)	5.0	-	+5400	-		RNP APCH
005	TF	KU504	Y	221 (225.4)	8.4	-	+2290	-	3.5	RNP APCH
006	DF	KU505	-	-	-	R	-	-185		RNP APCH
007	TF	SINNE	-	320 (324.2)	11.3	-	+10000	-		RNP APCH
008	HM	SINNE	Y	75 (79.4)	-	R	+10000	-230		RNP APCH

WAYPOINTS

Waypoint	Role	Coordinates (WGS-84)
SINNE	IAF/MAHF	421447.5604N 0201002.0795E
KU501	-	421809.6097N 0203442.4482E
KU502	IF	421435.9621N 0203926.2385E
KU503	FAF	421105.3940N 0203438.5705E
-	SDF	420719.0547N 0202930.3270E
KU504	MAPt	420512.6517N 0202638.1032E
KU505	MATF	420536.5277N 0201856.9308E