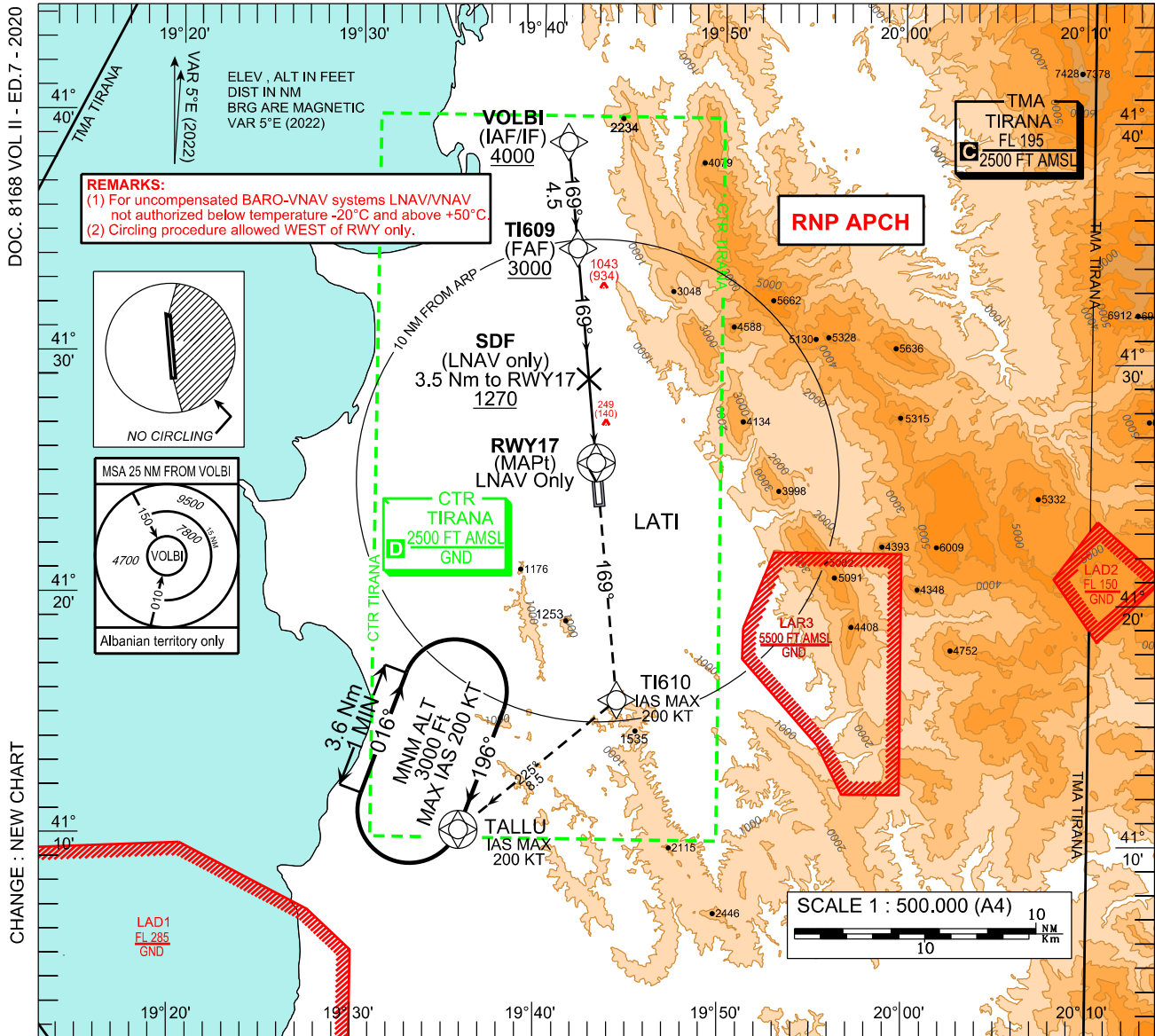
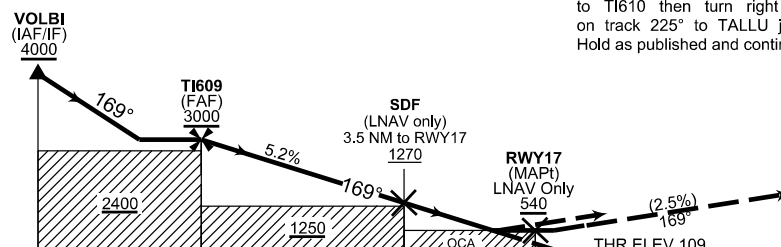


INSTRUMENT
APPROACH
CHART - ICAOAERODROME ELEVATION 125 FT
HEIGHTS RELATED TO
THR RWY 17 - ELEV 109 FT

TWR	122.500	ATIS	132.275
	123.500	APP	133.150
			136.350
		ACC	127.500
			136.350

TIRANA (LATI)
RNP
RWY17TRANSITION ALTITUDE
10000 FTVPA 3.0°
TCH 17.4 M

NM to/from RWY17



MISSED APPROACH :

Climbing to 3000 FT, continue straight direct to TI610 then turn right (IAS MAX 200 KT) on track 225° to TALLU joining holding pattern. Hold as published and continue as directed by ATC.

THR 17 DIST (NM)	NM	8.9	8	7	6	5.0	4	3	2
ALT (HGT) 3.0° APCH	FT	3000 (2891)	2715 (2606)	2395 (2286)	2080 (1971)	1760 (1651)	1440 (1331)	1120 (1011)	805 (696)

OCA / H		A	B	C	D	Timing not authorized for defining MAPt				
LNAV/VNAV	FT	420 (311)	430 (321)	440 (331)	450 (341)	NOMINAL DESCENT	KT	90	120	140
LNAV	FT	540 (431)				FAF to RWY17 (8.9 NM)	MIN:S	5:56	4:27	3:49
CIRCLING (2)	FT	870 (745)	1270 (1145)	1480 (1355)	1750 (1625)			160	180	
						RATE OF DESCENT	FT/MIN	480	640	745
								850	955	

LATI

RNP RWY 17

Serial Number	Path Terminator	Waypoint Identifier	Fly Over	Course °M(°T)	Magnetic Variation	Distance (NM)	Turn Direction	Altitude (ft)	Speed Limit (kt)	VPA/ TCH	Navigation Specification
010	IF	VOLBI	N					+4000	250		RNAV 1
020	TF	TI609	N	169 (174.3)		4.5		+3000			RNP APCH
030	TF	RWY17	Y	169 (174.3)		8.9		+166		3.0°/ 17.4m	RNP APCH
040	DF	TI610	N						200		RNAV 1
050	TF	TALLU	Y	225 (230.0)		8.5		+3000	200		RNAV 1

Path Terminator	Waypoint Identifier	Inbound Course °M (°T)	Leg Distance (NM)	Timing (min.)	Turn Direction	Minimum Altitude (FT)	Maximum Altitude (FL)	Speed Limit (kt)	Magnetic Variation (°)	Navigation Specification
<i>HOLD</i> HM	TALLU	196 (200.5)	3.6	1 min	R	+3000		200	4.9	RNAV1

WAYPOINT LIST

RNP RWY 17

Waypoint Identifier	Coordinates
TI609	41°34'28.90"N, 019°41'57.29"E
RWY17	41°25'37.31"N, 019°43'08.15"E
TI610	41°15'47.54"N, 019°44'26.31"E
TALLU	41°10'20.00"N, 019°35'51.00"E
VOLBI	41°38'55.00"N, 019°41'22.00"E