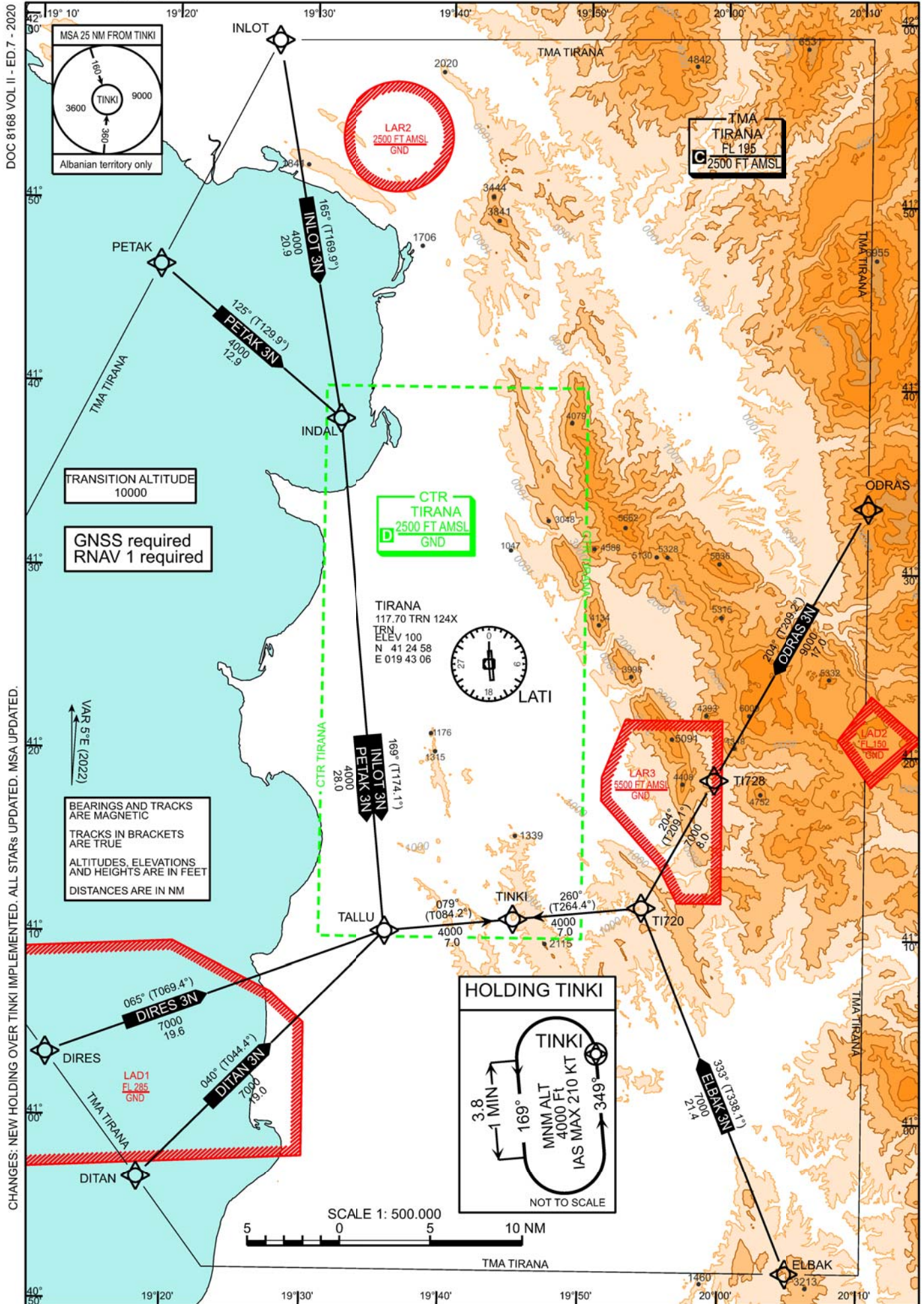


STANDARD ARRIVAL CHART -
INSTRUMENT (STAR) - ICAOAD ELEV 125 FT
VAR 5°ETWR
122.500
123.500ATIS
132.275
APP
133.150
136.350ACC
127.500
136.350TIRANA, LATI
RNAV STAR RWY 35
ALBANIA

CHANGES: NEW HOLDING OVER TINKI IMPLEMENTED. ALL STARS UPDATED. MSA UPDATED.

Designator		Route		Remarks				
INLOT 3N Inlot three november arrival		INLOT – INDAL – TALLU – TINKI						
RNAV STAR Coding Table of INLOT 3N								
Path Terminator	Waypoint		DIST NM	Turn Direction	Constraints		Navigation Specification	Remarks
	Identifier	Flyover			Coordinates	Crossing ALT		
IF	INLOT	no	N415847.00 E0192711.00			F120+	RNAV 1	
TF	INDAL	no	N413813.00 E0193204.00	165° (169.9°)	20.9	A4000+	RNAV 1	
TF	TALLU	no	N411020.00 E0193551.00	169° (174.1°)	28.0	A4000+ right	RNAV 1	
TF	TINKI	no	N411102.00 E0194504.00	079° (084.2°)	7.0	A4000+ left	RNAV 1	
RNAV STAR Coding Table of ODRAS 3N								
Designator		Route		Remarks				
ODRAS 3N Odras three november arrival		ODRAS – TIT28 – TIT20 – TINKI						
RNAV STAR Coding Table of ODRAS 3N								
Path Terminator	Waypoint		DIST NM	Turn Direction	Constraints		Navigation Specification	Remarks
	Identifier	Flyover			Coordinates	Crossing ALT		
IF	ODRAS	no	N413335.00 E0201027.00			F140+	RNAV 1	
TF	TIT28	no	N411843.10 E0195926.23	204° (209.2°)	17.0	A9000+	RNAV 1	
TF	TIT20	no	N411143.26 E0195417.19	204° (209.1°)	8.0	A7000+	RNAV 1	
TF	TINKI	no	N411102.00 E0194504.00	260° (264.4°)	7.0	A4000+ right	RNAV 1	
RNAV STAR Coding Table of PETAK 3N								
Designator		Route		Remarks				
PETAK 3N Pelak three november arrival		PETAK – INDAL – TALLU – TINKI						
RNAV STAR Coding Table of PETAK 3N								
Path Terminator	Waypoint		DIST NM	Turn Direction	Constraints		Navigation Specification	Remarks
	Identifier	Flyover			Coordinates	Crossing ALT		
IF	PETAK	no	N414631.00 E0191850.00			F120+	RNAV 1	
TF	INDAL	no	N413813.00 E0193204.00	125° (129.9°)	12.9	A4000+	RNAV 1	
TF	TALLU	no	N411020.00 E0193551.00	169° (174.1°)	28.0	A4000+ right	RNAV 1	
TF	TINKI	no	N411102.00 E0194504.00	079° (084.2°)	7.0	A4000+ left	RNAV 1	

Designator		Route				Remarks				
DIRE 3N Dire three november arrival		DIRE – TALLU – TINKI								
RNAV STAR Coding Table of DIRE 3N										
Path Terminator	Waypoint		Course/ Track ° MAG (° True)	DIST NM	Turn Direction	Constraints	Remarks			
	Identifier	Coordinates						Crossing ALT	Speed	
IF	DIRE	no	N410328.00 E0191133.00			F120+	RNAV 1			
TF	TALLU	no	N411020.00 E0193551.00	19.6 (069.4°)		A7000+	RNAV 1			
TF	TINKI	no	N411102.00 E0194504.00	7.0 (084.2°)	right	A4000+	RNAV 1			
Designator		Route				Remarks				
DITAN 3N Ditan three november arrival		DITAN – TALLU – TINKI								
RNAV STAR Coding Table of DITAN 2N										
Path Terminator	Waypoint		Course/ Track ° MAG (° True)	DIST NM	Turn Direction	Constraints	Remarks			
	Identifier	Coordinates						Crossing ALT	Speed	
IF	DITAN	no	N405644.00 E0191813.00			F120+	RNAV 1			
TF	TALLU	no	N411020.00 E0193551.00	19.0 (044.4°)		A7000+	RNAV 1			
TF	TINKI	no	N411102.00 E0194504.00	7.0 (084.2°)	right	A4000+	RNAV 1			
Designator		Route				Remarks				
ELBAK 3N Elbak three november arrival		ELBAK – TIT20 – TINKI								
RNAV STAR Coding Table of ELBAK 3N										
Path Terminator	Waypoint		Course/ Track ° MAG (° True)	DIST NM	Turn Direction	Constraints	Remarks			
	Identifier	Coordinates						Crossing ALT	Speed	
IF	ELBAK	no	N405151.00 E0200452.00			F120+	RNAV 1			
TF	TIT20	no	N411143.26 E0195417.19	21.4 (338.1°)		A7000+	RNAV 1			
TF	TINKI	no	N411102.00 E0194504.00	7.0 (264.4°)	left	A4000+	RNAV 1			
Path Terminator		Inbound Course °M (°T)	Leg Distance (NM) ¹	Timing (min./ Waypoint Distance ²)	Turn Direction	Minimum Altitude (FT)	Maximum Altitude (FL)	Speed Limit (kt)	Magnetic Variation (°)	S
HOLD HMI	TINKI	349°	3.8	1 min	Left	+4000		210	4.9	