

STANDARD DEPARTURE CHART -
INSTRUMENT
(SID) - ICAO

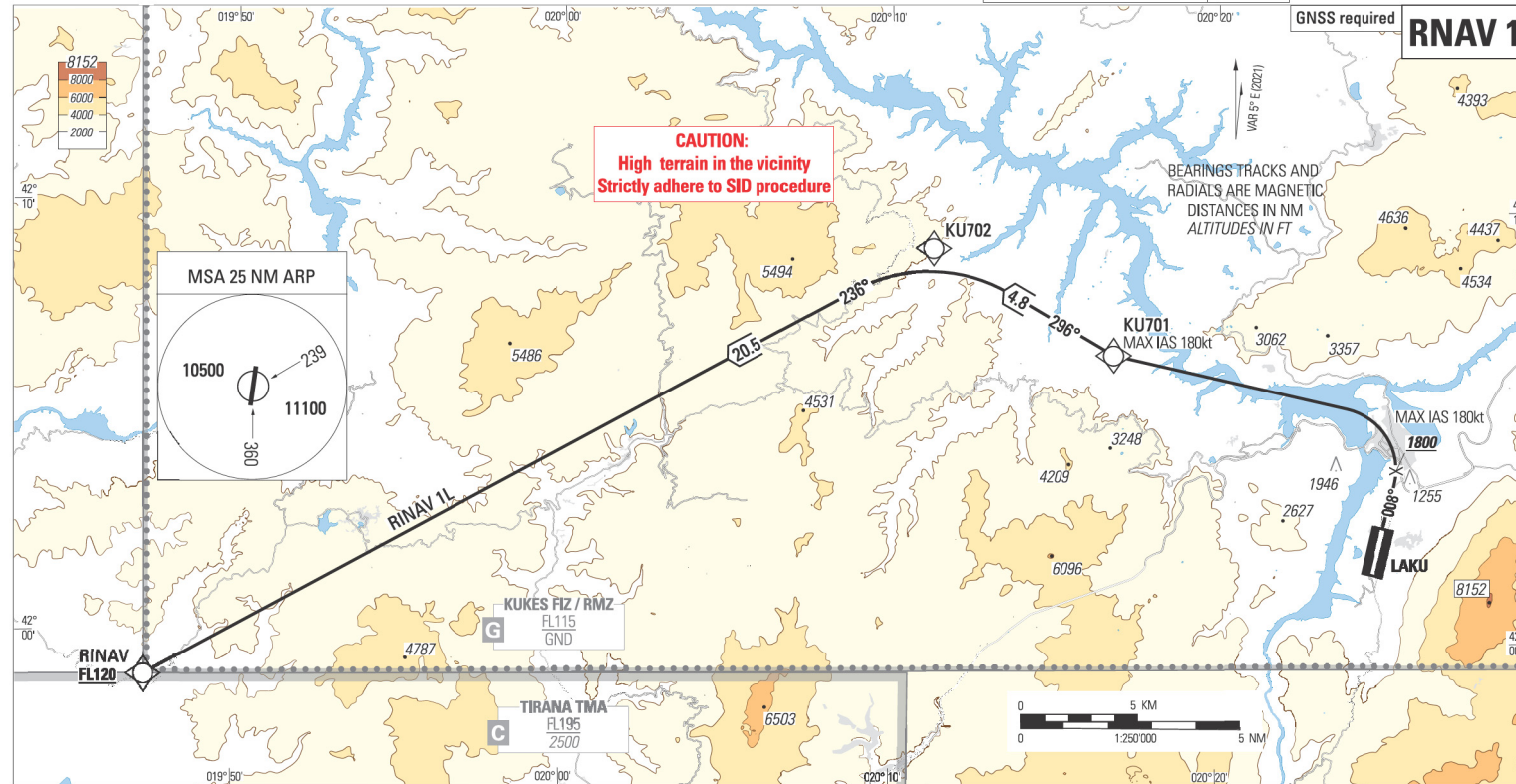
AD ELEV 1160 FT

TRANSITION ALTITUDE
10000

AERODROME INFORMATION	118.375
APPROACH	119.825
	133.155

KUKES LAKU
SID RNAV 1
RWY 01

GNSS required

RNAV 1**RINAV 1L**

After take-off climb on course 008°.
At 1800 FT, turn LEFT direct to KU701 (MAX 180 KIAS),
then continue to KU702 and to RINAV at or above FL120.

Requires a minimum climb gradient of 9.5% (578 FT/NM)
till passing 5000 FT and 4.3% (262 FT/NM) till reaching FL120.

CHANGE : APPROACH FREQUENCY CHANGED.

RNAV SID RWY 01

TABULAR DESCRIPTION

Serial No.	Path Term.	Waypoint Identifier	Fly-over	Course °M (°T)	Dist. (NM)	Turn	Altitude (ft)	Speed Limit (KIAS)	Navigation Specification
RINAV1L									
001	CA	-	-	008 (013.0)	-	-	+1800	-	RNAV 1
002	DF	KU701	-	-	-	L	-	-180	RNAV 1
003	TF	KU702	-	296 (300.6)	4.8	-	-	-	RNAV 1
004	TF	RINAV	-	236 (240.6)	20.5	-	+FL120	-	RNAV 1

WAYPOINTS

Waypoint Name	Role	Coordinates (WGS-84)
KU701	-	420637.56N 0201650.59E
KU702	-	420904.43N 0201117.23E
RINAV	En-route	415901.00N 0194718.00E