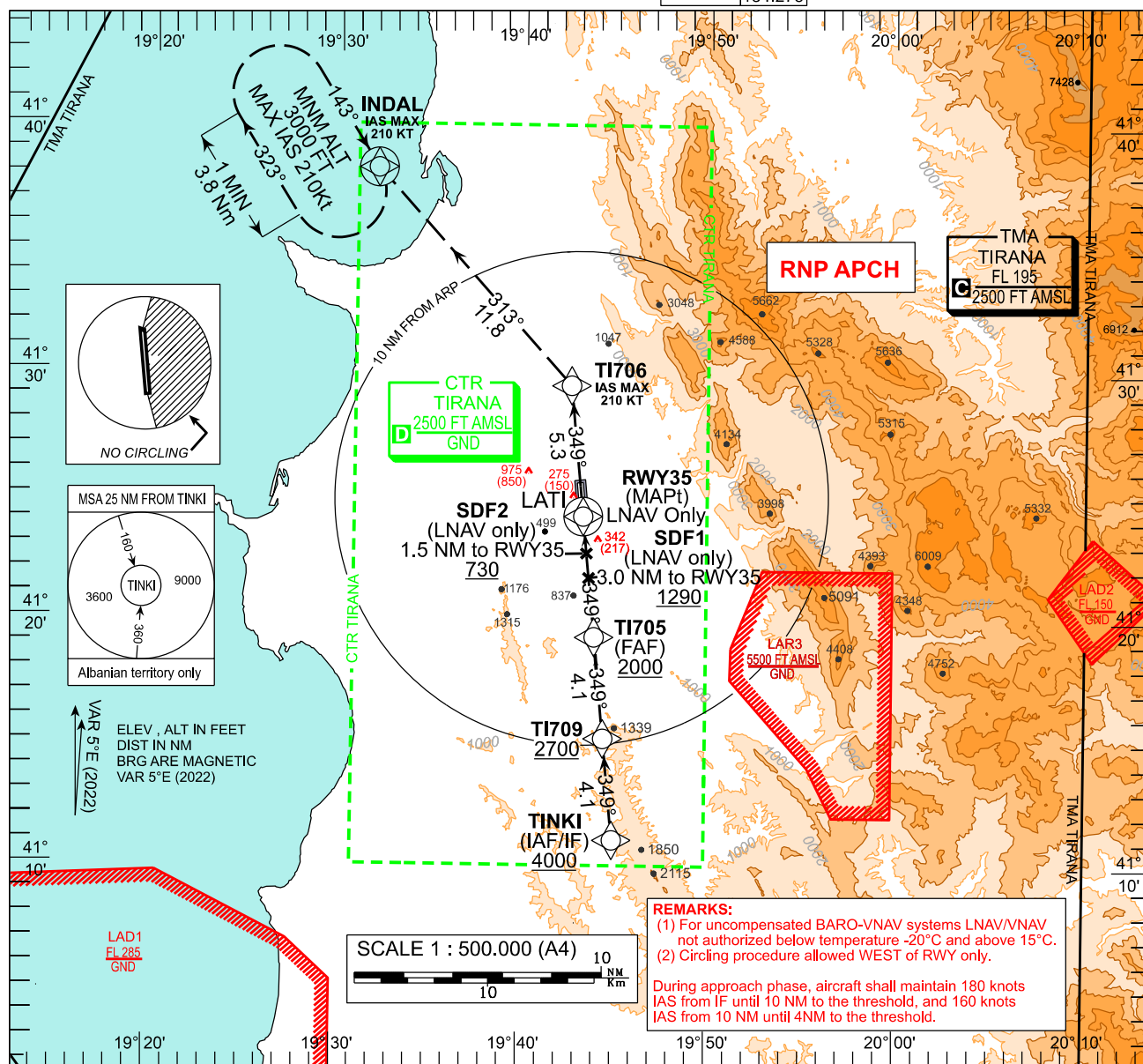


**AERODROME ELEVATION 125 FT**  
HEIGHTS RELATED TO  
THR RWY 35 - ELEV 125 FT

TWR	122.510	ATIS	132.275	ACC	127.505
	123.510	APP	133.155		134.275
			134.275		

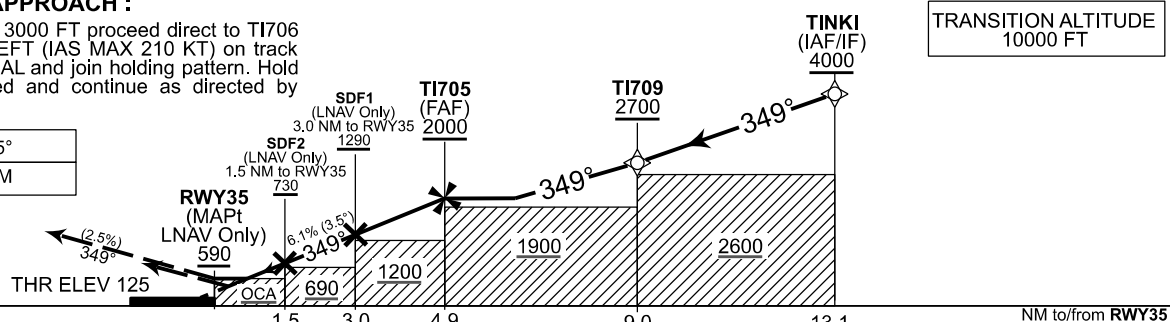
TIRANA (LATI)  
RNP  
RWY35

DOC. 8168 VOL II - ED.7 - 2020



Climbing to 3000 FT proceed direct to T1706 then turn LEFT (IAS MAX 210 KT) on track 313° to INDAL and join holding pattern. Hold as published and continue as directed by ATC.

VPA 3.5°  
TCH 15 M



RWY35 DME DIST (NM)	NM	1.5	2	3	3.5	4	4.9
ALT (HGT) 3.5° APCH	FT	730 (605)	920 (795)	1290 (1165)	1475 (1350)	1660 (1535)	2000 (1875)

OCA / H		A	B	C	D	Timing not authorized for defining MAPt						
LNAV/VNAV	FT	500 (375)	510 (385)	520 (395)	530 (405)	<b>NOMINAL DESCENT</b>	KT	90	120	140	160	180
LNAV	FT	590 (465)				FAF to RWY35 (4.9 NM)	MIN/S	3:16	2:27	2:06	1:50	1:38
CIRCLING (2)	FT	870 (745)	1270 (1145)	1480 (1355)	1750 (1625)	RATE OF DESCENT	FT/MIN	556	741	865	988	1115

CHANGE: OPERATING FREQUENCIES CHANGED. LIMITATION OF AIRCRAFT SPEED ADDED.

TABULAR DESCRIPTION

LATI

RNP RWY 35

Serial Number	Path Terminator	Waypoint Identifier	Fly Over	Course °M(°T)	Magnetic Variation	Distance (NM)	Turn Direction	Altitude (ft)	Speed Limit (kt)	VPA/ TCH	Navigation Specification
010	IF	TINKI	N					+4000			RNAV 1
020	TF	TI709	N	349 (354.3)		4.1		+2700			RNAV 1
030	TF	TI705	N	349 (354.3)		4.1		+2000			RNP APCH
060	TF	RWY35	Y	349 (354.3)		4.9		+175		3.5°/ 15m	RNP APCH
020	DF	TI706	N			5.3			210		RNAV 1
030	TF	INDAL	Y	313 (317.9)		11.8		+3000	210		RNAV 1

Path Terminator	Waypoint Identifier	Inbound Course °M (°T)	Leg Distance (NM)	Timing (min.)	Turn Direction	Minimum Altitude (FT)	Maximum Altitude (FL)	Speed Limit (kt)	Magnetic Variation (°)	Navigation Specification
<i>HOLD</i> HM	INDAL	143 (147.9)	3.8	1 min	R	+3000		210	4.9	RNAV1

WAYPOINT LIST  
RNP RWY 35

Waypoint Identifier	Coordinates
TI709	41°15'08.72" N 019°44'31.47"E
TI705	41°19'15.45" N 019°43'58.83"E
RWY35	41°24'08.74" N 019°43'19.92"E
TI706	41°29'26.63"N 019°42'37.59"E
INDAL	41°38'13.00"N 019°32'04.00"E
TINKI	41°11'02.00"N 019°45'04.00"E