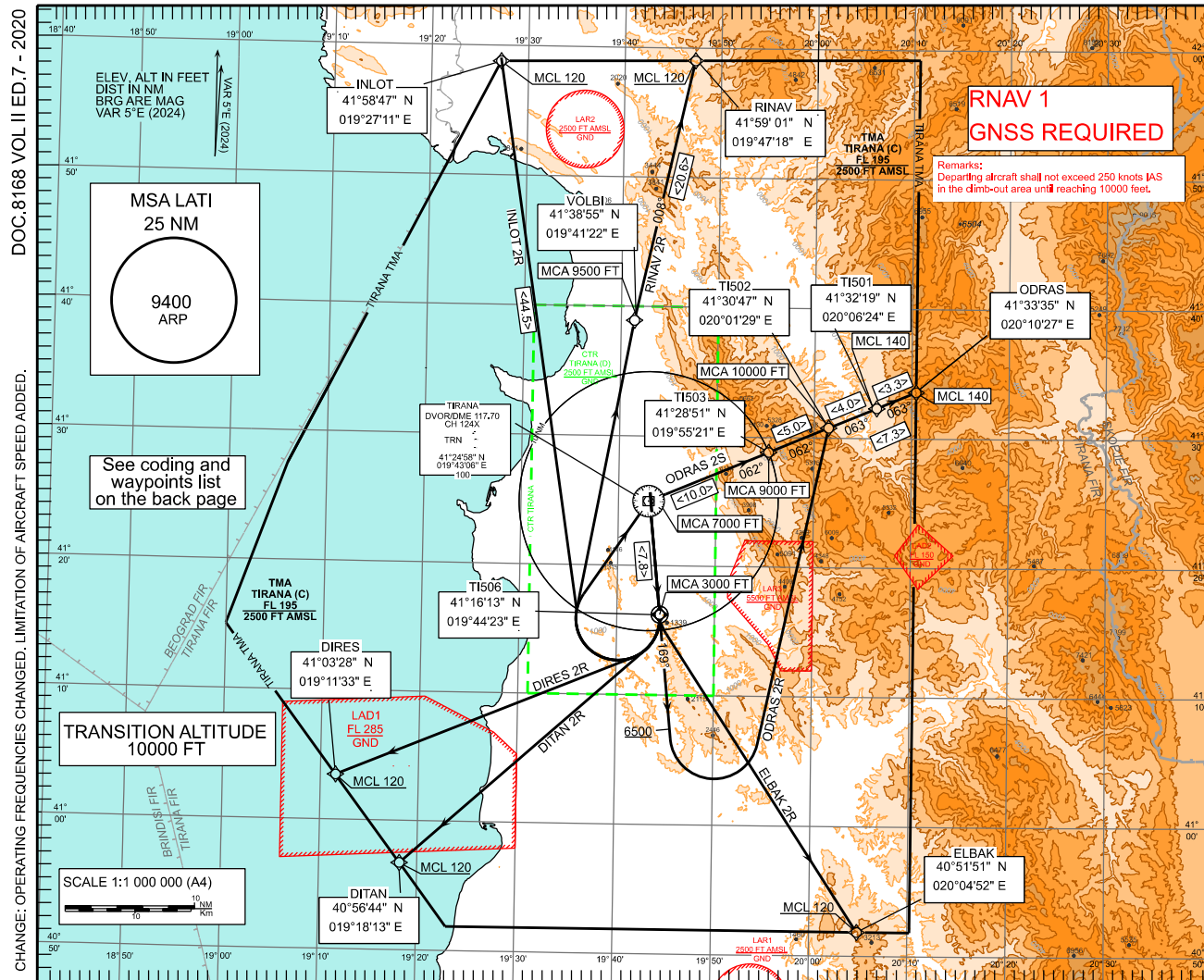


**TIRANA, LATI**  
RNAV SID  
RWY17



## ODRAS 2R

After take-off climb on course 169° until 6500 ft, turn LEFT DCT TI502 above 10000 ft, then continue on track 063° to ODRAS at or above FL140.

Requires a minimum climb gradient of 6.0% (365 ft/NM) till passing 6500 ft.

## DIRES 2R

After take-off climb on course 169° until T1506 at or above 3000 ft, then turn RIGHT DCT DIRES at or above FL120.

Requires a minimum climb gradient of 6.0% (365 ft/NM) till passing FL120.

**DITAN 2R**

After take-off climb on course 169° until TI506 at or above 3000 ft, then turn RIGHT DCT DITAN at or above FL120.

Requires a minimum climb gradient of 6.0% (365 ft/NM) till passing FL120.

## INLOT 2R

After take-off climb on course 169° until T1506 at or above 3000 ft, then turn RIGHT DCT to INLOT at or above FL120.

Requires a minimum climb gradient of 6.0% (365 ft/NM) to TI506.

## RINAV 2R

After take-off climb on course 169° until TI506 at or above 3000 ft, then turn RIGHT DCT VOLBI above 9500 ft, then continue on track 008° to RINAV at or above FL120.

Requires a minimum climb gradient of 6.0% (365 ft/NM) to TI506.

**ELBAK 2R**

After take-off climb on course 169° until TI506 at or above 3000 ft, then turn LEFT DCT ELBAK at or above FL120.

Requires a minimum climb gradient of 6.0% (365 ft/NM) till passing FL120.

**ODRAS 2S**

After take-off climb on course 169° until TI506 at or above 3000 ft, turn RIGHT DCT TRN above 7000 ft, then proceed via TI503 above 9000 ft - TI502 above 10000 ft - TI501 - ODRAS at or above FL140.

Requires a minimum climb gradient of 6.0% (365 ft/NM) to TRN.

RNAV SID RWY 17  
TABULAR DESCRIPTION

Serial Number	P&T	Waypoint Name	FO	Track M°	Distance (NM)	Turn Direction	MCA/MCL	Speed Limit (KT)	Navigation Specification
<b>ODRAS 2R</b>									
010	CA	-	-	169	-	-	+6500	-	RNAV 1
020	DF	TI502	-	-	-	L	+10000	-	RNAV 1
030	TF	ODRAS	-	063	7.3	-	+FL140	-	RNAV 1
<b>DIRES 2R</b>									
010	CF	TI506	Y	169	7.8	-	+3000	-	RNAV 1
020	DF	DIRES	-	-	-	R	+FL120	-	RNAV 1
<b>DITAN 2R</b>									
010	CF	TI506	Y	169	7.8	-	+3000	-	RNAV 1
020	DF	DITAN	-	-	-	R	+FL120	-	RNAV 1
<b>INLOT 2R</b>									
010	CF	TI506	Y	169	7.8	-	+3000	-	RNAV 1
020	DF	INLOT	-	-	44.5	R	+FL120	-	RNAV 1
<b>RINAV 2R</b>									
010	CF	TI506	Y	169	7.8	-	+3000	-	RNAV 1
020	DF	VOLBI	-	-	-	R	+9500	-	RNAV 1
030	TF	RINAV	-	008	20.6	R	+FL120	-	RNAV 1
<b>ELBAK 2R</b>									
010	CF	TI506	Y	169	7.8	-	+3000	-	RNAV 1
020	DF	ELBAK	-	-	-	L	+FL120	-	RNAV 1
<b>ODRAS 2S</b>									
010	CF	TI506	Y	169	7.8	-	+3000	-	RNAV 1
020	DF	TRN	-	-	-	R	+7000	-	RNAV 1
030	TF	TI503	-	062	10.0	-	+9000	-	RNAV 1
040	TF	TI502	-	062	5.0	-	+10000	-	RNAV 1
050	TF	TI501	-	063	4.0	-	+FL140	-	RNAV 1
060	TF	ODRAS	-	063	3.3	-	+FL140	-	RNAV 1

WAYPOINT LIST

Waypoint Name	Coordinates
<b>DIRES</b>	410328N 0191133E
<b>DITAN</b>	405644N 0191813E
<b>ELBAK</b>	405151N 0200452E
<b>INLOT</b>	415847N 0192711E
<b>ODRAS</b>	413335N 0201027E
<b>RINAV</b>	415901N 0194718E
<b>TI501</b>	413219N 0200624E
<b>TI502</b>	413047N 0200129E
<b>TI503</b>	412851N 0195521E
<b>TI504</b>	413556N 0194146E
<b>TI505</b>	411633N 0193639E
<b>TI506</b>	411613N 0194423E
<b>TRN</b>	412458N 0194306E